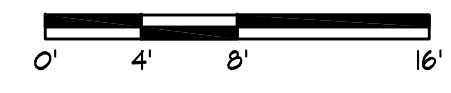


01 WEST ELEVATION
A202 SCALE: 1/8" = 1'-0"



ELEVATION NOTES:

1. FOR ALL HARDIE PANEL CONNECTIONS SEE A501
2. WALL OPENINGS UP TO 45% ALLOWED WHERE THE HORIZONTAL FIRE SEPARATION DISTANCE IS GREATER THAN 15'-0" (DCMR 12A 704.8.3.4). WALL OPENINGS ON NORTH ELEVATION AS INDICATED ON A203 DO NOT EXCEED 20%
3. ALIGN ALL HARDY PANEL JOINTS WITH EDGES OF OPENINGS AS SHOWN U/L/O
4. VERIFY VERTICAL DISTANCE TO HARDY PANEL JOINT ABOVE ALL DOORS.
5. TRIM EDGES HARDIE PLANK LAP SIDING WITH 3 1/2" CORNER TRIM BOARD

ELEVATION KEYNOTES:

- 1 ALUMINUM SUN SHADE - SEE 02/A405
- 2 EXTERIOR LIGHTING
- 3 ELEVATOR PENTHOUSE
- 4 TRASH CHUTE
- 5 CONTROL JOINT

EXTERIOR FINISHES: SEE SHEET A106 FOR SPECIFICATIONS

- (FCP-1) FIBER-CEMENT PLANK - 12"
- (FCP-2) NOT USED
- (FCP-3) 14" PVC TRIM PAINTED SW IRONSATE
- (CP-1) CEMENT PANEL - ANTHRACITE
- (MAS-1) MASONRY VENEER - LIGHT BUFF
- (MAS-2) MASONRY VENEER - BLACK
- (CON) CONCRETE
- (EF-1) EIFS PANEL
- (MP-1) 14" PREFORMED METAL CORNICE

PG Architects, PLLC
 210 7th Street SE - Suite 201
 Washington, DC 20003
 202.822.5995 (P); 202.822.0908 (F)

CONSULTANTS

CIVIL: AMT, LLC / A. Morton Thomas
 10 G Street NE - Suite 430
 Washington, DC 20002
 (P): 202-289-4545 (F): 202-289-5051

STRUCTURAL: Applied Structural Concepts, LLC
 2800 Longstone Lane - Suite 206
 Harrotsville, MD 21104
 (P): 301-748-2769

MEP: Williams Group, Inc.
 14325 Willard Road - Unit J
 Chantilly, VA 20151
 (P): 703-465-0222 (F): 703-465-0072

300 L STREET NE

300 L Street NE
 Washington, DC 20002
 Square No: 0773 Lot No: 90, 88 & 87 Zone: C-2-B

OWNER: A&W 300L, LLC
 1300 Piccard Drive - #106
 Rockville, MD 20850
 (P): 301-928-6790 (F): 301-948-0335

CONTRACTOR: Ellisdale Construction and Development
 1300 Piccard Drive - #106
 Rockville, MD 20850
 (P): 301-928-6790 (F): 301-948-0335

SCALE: 1/8" = 1'-0"
 DRAWN BY: DMS, TH CHECKED BY: JG
 PROJ NO.: 10-C033

ISSUE: PERMIT SET DATE: 9/7/2011

REVISION:	DATE:
1 REVISION 1	11/29/2011
2	
3	
4	
5	
6	
7	
8	

COPYRIGHT © 2011 PGN ARCHITECTS, PLLC

EXTERIOR ELEVATION

A 202

F
E
D
C
B
A

1 2 3 4 5 6



01 NORTH ELEVATION
A203 SCALE: 1/8" = 1'-0"

ELEVATION NOTES:

1. FOR ALL HARDIE PANEL CONNECTIONS SEE A501
2. WALL OPENINGS UP TO 45% ALLOWED WHERE THE HORIZONTAL FIRE SEPARATION DISTANCE IS GREATER THAN 15'-0" (DCMR 12A 704.8.3.4). WALL OPENINGS ON NORTH ELEVATION AS INDICATED ON A203 DO NOT EXCEED 20%
3. ALIGN ALL HARDY PANEL JOINTS WITH EDGES OF OPENINGS AS SHOWN U/I/O
4. VERIFY VERTICAL DISTANCE TO HARDY PANEL JOINT ABOVE ALL DOORS.
5. TRIM EDGES HARDIE PLANK LAP SIDING WITH 3 1/2" CORNER TRIM BOARD

ELEVATION KEYNOTES:

- 1 ALUMINUM SUN SHADE - SEE 02/A405
- 2 EXTERIOR LIGHTING
- 3 ELEVATOR PENTHOUSE
- 4 TRASH CHUTE
- 5 CONTROL JOINT

EXTERIOR FINISHES: SEE SHEET A106 FOR SPECIFICATIONS

- (FCP-1) FIBER-CEMENT PLANK - 12"
- (FCP-2) NOT USED
- (FCP-3) 14" PVC TRIM PAINTED SW IRONSATE
- (CP-1) CEMENT PANEL - ANTHRACITE
- (MAS-1) MASONRY VENEER - LIGHT BUFF
- (MAS-2) MASONRY VENEER - BLACK
- (CON) CONCRETE
- (EP-1) EIFS PANEL
- (MP-1) 14" PREFORMED METAL CORNICE

PG Architects, PLLC
 210 7th Street SE - Suite 201
 Washington, DC 20003
 202.822.5995 (P); 202.822.0908 (F)

CONSULTANTS

CIVIL: AMT, LLC / A. Morton Thomas
 10 G Street NE - Suite 430
 Washington, DC 20002
 (P): 202-289-4545 (F): 202-289-5051

STRUCTURAL: Applied Structural Concepts, LLC
 2800 Longstone Lane - Suite 206
 Hanover, MD 21104
 (P): 301-748-2769

MEP: Williams Group, Inc.
 14325 Willard Road - Unit J
 Chantilly, VA 20151
 (P): 703-465-0222 (F): 703-465-0072

300 L STREET NE

300 L Street NE
 Washington, DC 20002
 Square No: 0773 Lot No: 90, 88 & 87 Zone: C-2-B

OWNER: A&W 300L, LLC
 1300 Piccard Drive - #106
 Rockville, MD 20850
 (P): 301-928-6790 (F): 301-948-0335

CONTRACTOR: Ellisdale Construction and Development
 1300 Piccard Drive - #106
 Rockville, MD 20850
 (P): 301-928-6790 (F): 301-948-0335

SCALE: 1/8" = 1'-0"
 DRAWN BY: DMS, TH CHECKED BY: JGS
 PROJ NO.: 10-C033

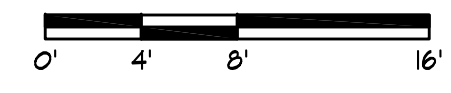
ISSUE: PERMIT SET DATE: 9/7/2011

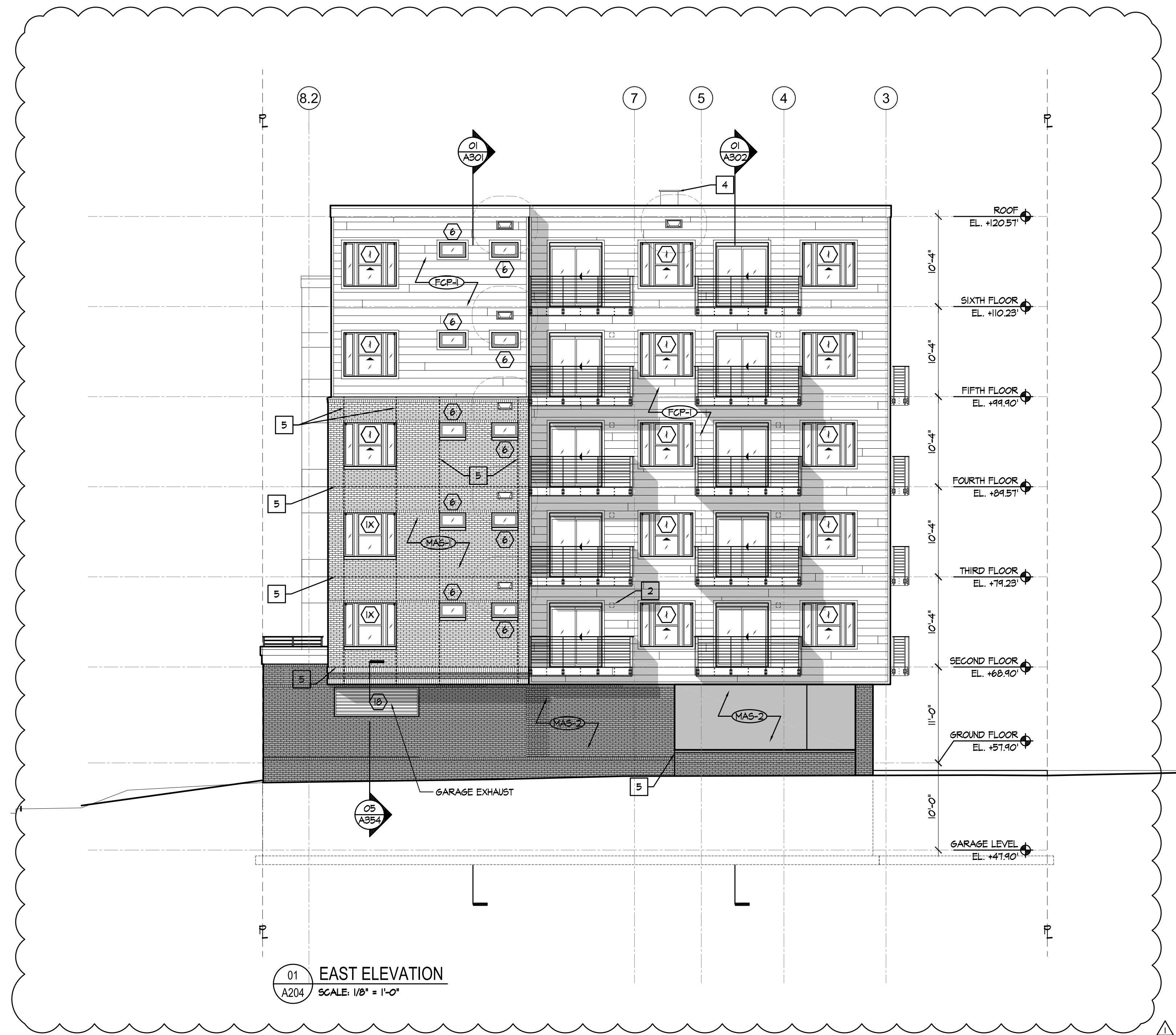
REVISION:
 1 REVISION 1 11/29/2011
 2
 3
 4
 5
 6
 7
 8

COPYRIGHT © 2011 PGN ARCHITECTS, PLLC

EXTERIOR ELEVATION

A 203





ELEVATION NOTES:

1. FOR ALL HARDIE PANEL CONNECTIONS SEE A501
2. WALL OPENINGS UP TO 45% ALLOWED WHERE THE HORIZONTAL FIRE SEPARATION DISTANCE IS GREATER THAN 15'-0" (DCMR 12A 704.8.3.4). WALL OPENINGS ON NORTH ELEVATION AS INDICATED ON A203 DO NOT EXCEED 20%
3. ALIGN ALL HARDY PANEL JOINTS WITH EDGES OF OPENINGS AS SHOWN U/L/O
4. VERIFY VERTICAL DISTANCE TO HARDY PANEL JOINT ABOVE ALL DOORS.
5. TRIM EDGES HARDIE PLANK LAP SIDING WITH 3/4" CORNER TRIM BOARD

ELEVATION KEYNOTES:

- 1 ALUMINUM SUN SHADE - SEE 02/A405
- 2 EXTERIOR LIGHTING
- 3 ELEVATOR PENTHOUSE
- 4 TRASH CHUTE
- 5 CONTROL JOINT

EXTERIOR FINISHES: SEE SHEET A106 FOR SPECIFICATIONS

- (FCP-1) FIBER-CEMENT PLANK - 12"
- (FCP-2) NOT USED
- (FCP-3) 1/4" PVC TRIM PAINTED SW IRONSATE
- (CP-1) CEMENT PANEL - ANTHRACITE
- (MAS-1) MASONRY VENEER - LIGHT BUFF
- (MAS-2) MASONRY VENEER - BLACK
- (CON) CONCRETE
- (EF-1) EIFS PANEL
- (MP-1) 1/4" PREFORMED METAL CORNICE



**210 7th Street SE - Suite 201
Washington, DC 20003
202.822.5995 (P); 202.822.0908 (F)**

CONSULTANTS

CIVIL: AMT, LLC / A. Morton Thomas
10 G Street NE - Suite 430
Washington, DC 20002
(P): 202-289-4545 (F): 202-289-5051

STRUCTURAL: Applied Structural Concepts, LLC
2800 Longstone Lane - Suite 206
Harrisville, MD 21104
(P): 301-748-2769

MEP: Williams Group, Inc.
14325 Willard Road - Unit J
Chantilly, VA 20151
(P): 703-465-0222 (F): 703-465-0072

300 L STREET NE

300 L Street NE
Washington, DC 20002
Square No: 0773 Lot No: 90, 88 & 87 Zone: C-2-B

OWNER: A&W 300L, LLC
1300 Piccard Drive - #106
Rockville, MD 20850
(P): 301-928-6790 (F): 301-948-0335

CONTRACTOR: Ellisdale Construction and Development
1300 Piccard Drive - #106
Rockville, MD 20850
(P): 301-928-6790 (F): 301-948-0335

SEAL

SCALE: 1/8" = 1'-0"
DRAWN BY: DMS, TH CHECKED BY: JG
PROJ NO.: 10-C033

ISSUE: PERMIT SET DATE: 9/7/2011

REVISION:	
1	REVISION 1 11/29/2011
2	
3	
4	
5	
6	
7	
8	

COPYRIGHT © 2011 PGN ARCHITECTS, PLLC

EXTERIOR ELEVATION

A 204

